



OLIVE LEAF  
LETTINGS  
LTD



63b Keightley Road, Leicester, LE3 9LQ

£750 Per month



1



1



1



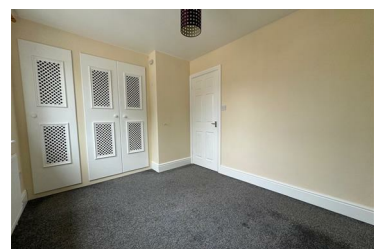
C

Olive Leaf Lettings this one bedroomed first floor flat in the heart of New Parks - residential suburb.

With a postcode of LE3 , this property is easily accessible and well-connected to the rest of the town.

The property benefits from gas central heating and double glazed windows. The open plan lounge/kitchen is equipped gas hob, electric oven and plumbing for washing machine. The lounge also benefits from laminate flooring.

The bathroom is fully equipped with bath/shower over, basin and wc.



17 Sowters Lane, Burton on the Wolds, Leicestershire, LE12 5AL

Tel: 01163 262820 Email: [admin@oliveleaflettings.co.uk](mailto:admin@oliveleaflettings.co.uk) [www.oliveleaflettings.co.uk](http://www.oliveleaflettings.co.uk)